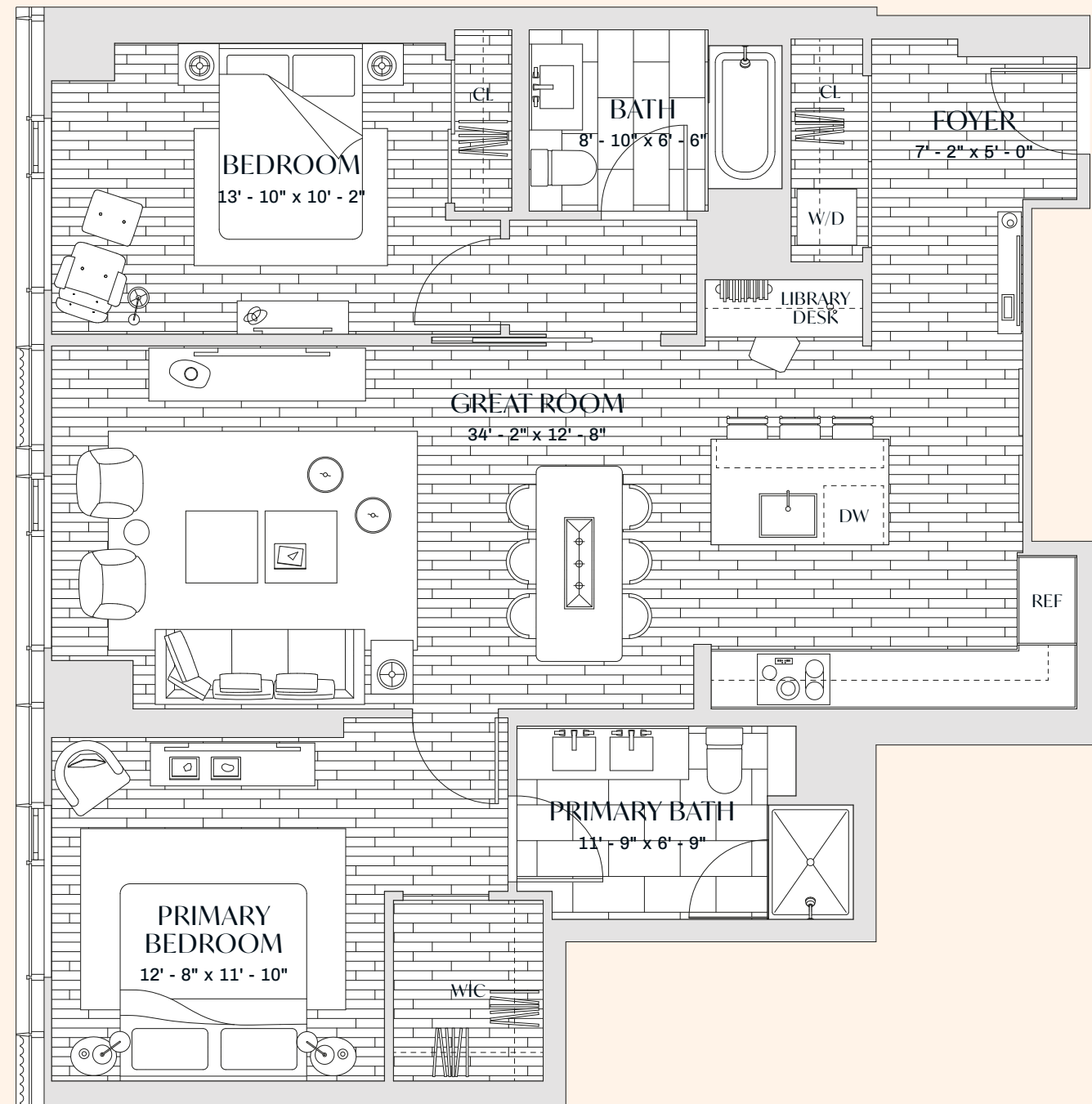
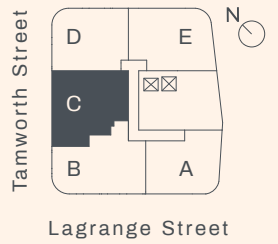


The PARKER



PHC

FLOOR 21

2 BEDROOMS
2 BATHROOMS
1,218 SQFT | 113 SQM

THEPARKERBOSTON.COM

55 Lagrange Street T 617 423 5555

Plans, dimensions and features shown are approximate and are subject to change without notice or obligation. Variations may occur depending, for example, on construction variances, location of unit and/or mechanical or structural requirements. Equal Housing Opportunity.

 **FORTIS**

 **Douglas Elliman**
EXCLUSIVE SALES AND MARKETING
DEVELOPMENT MARKETING